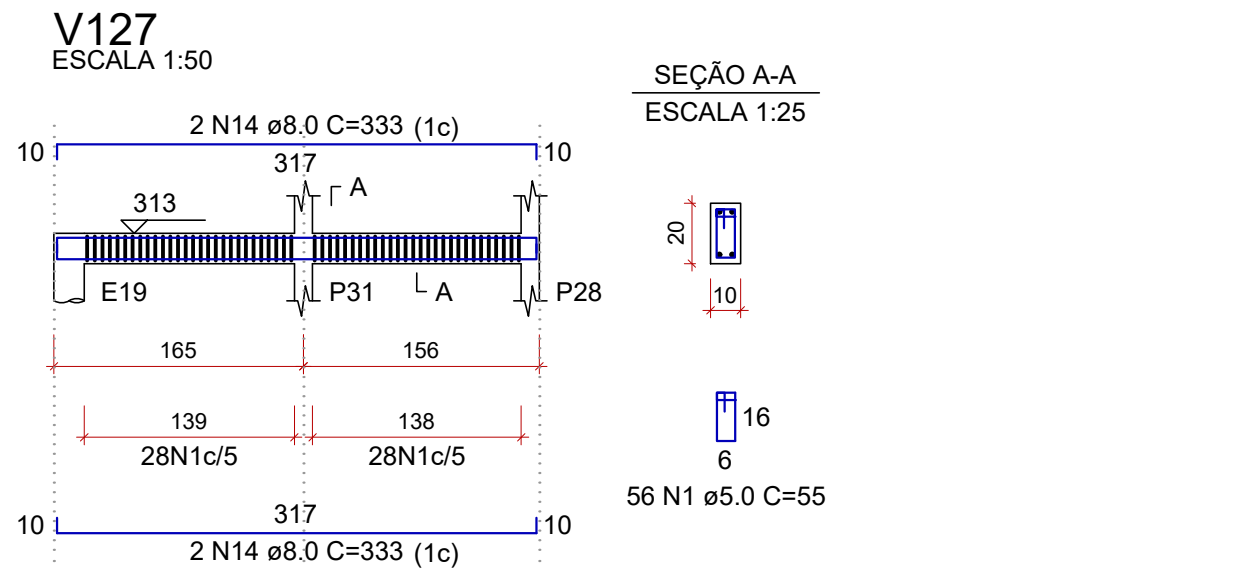
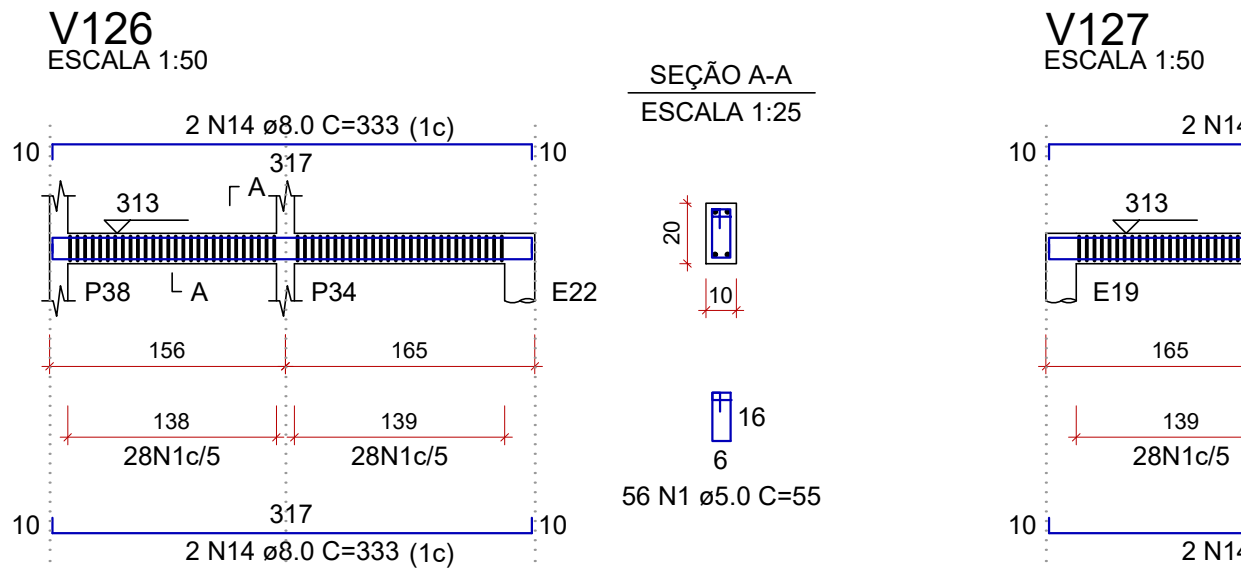
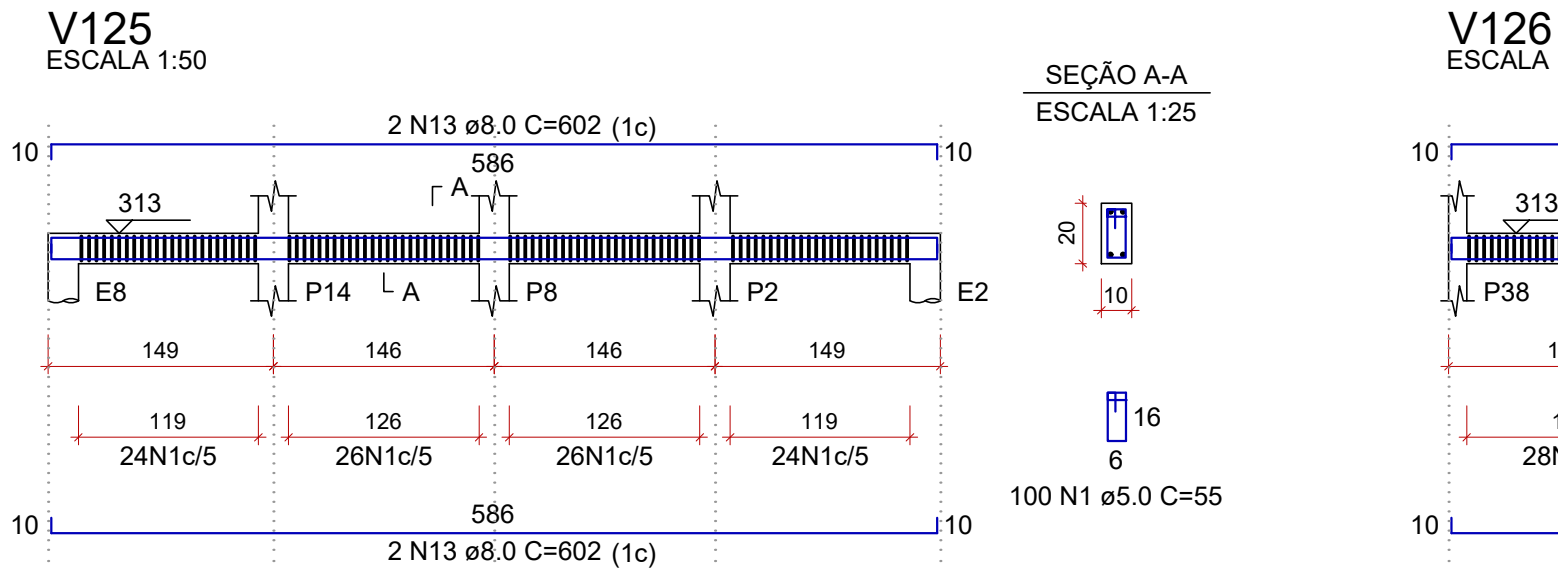
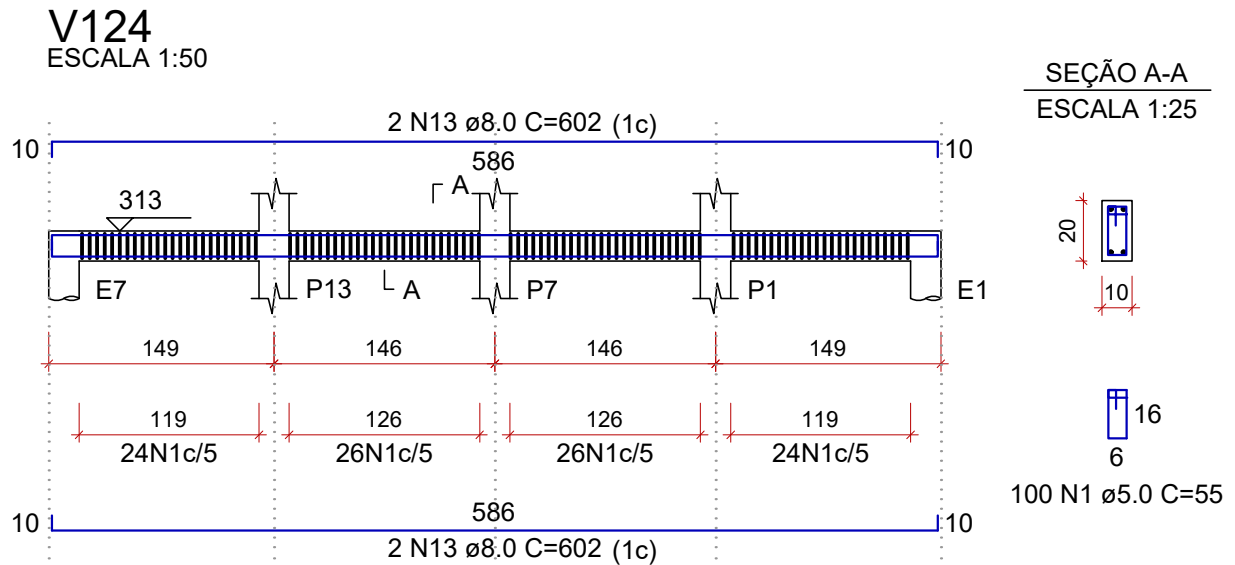
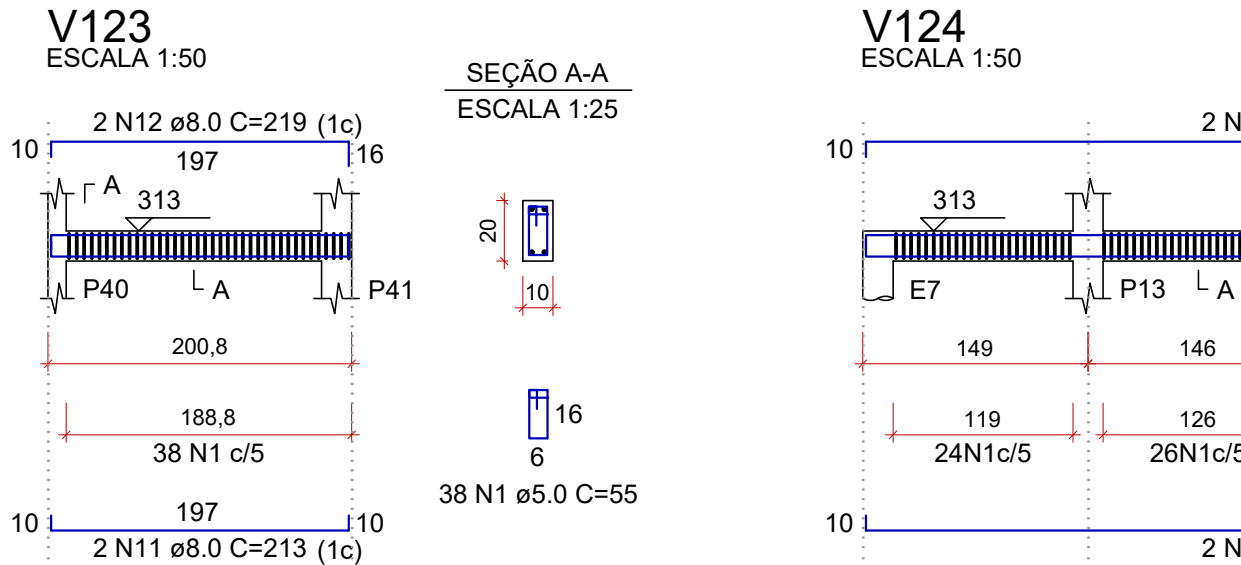
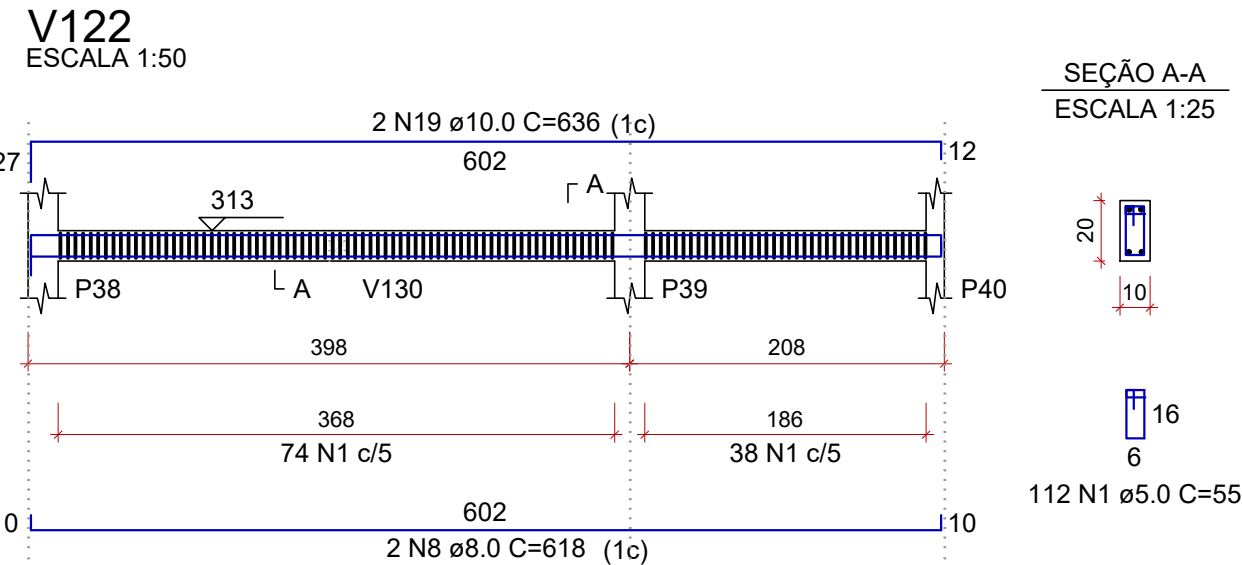
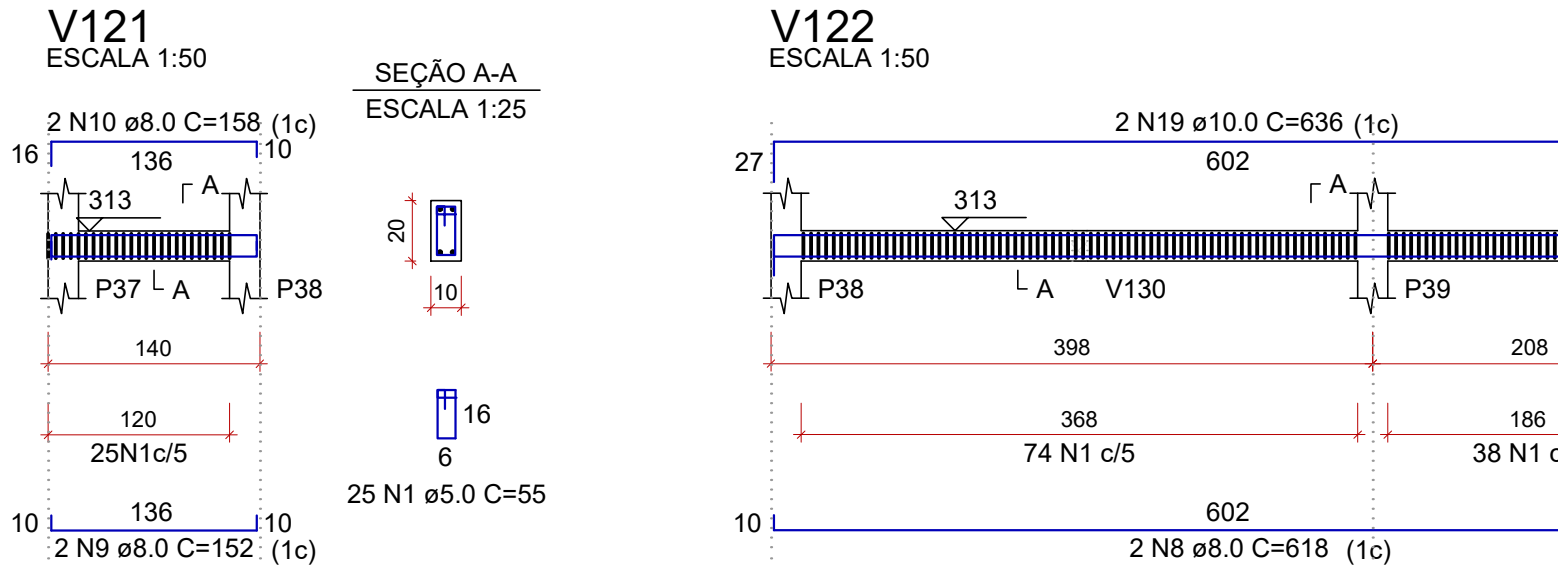
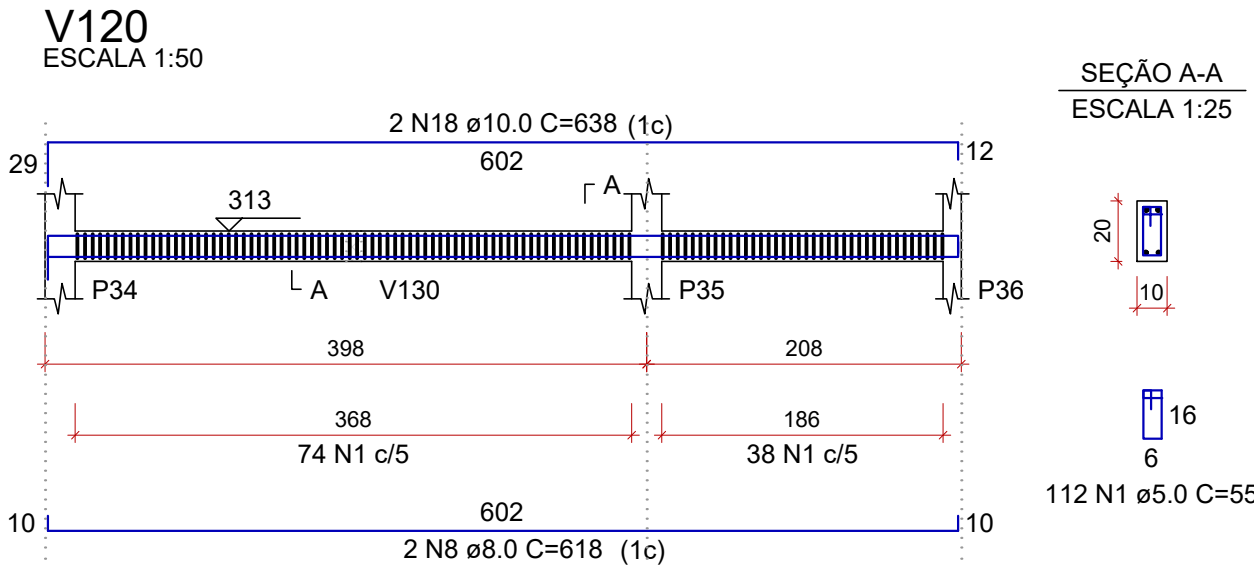
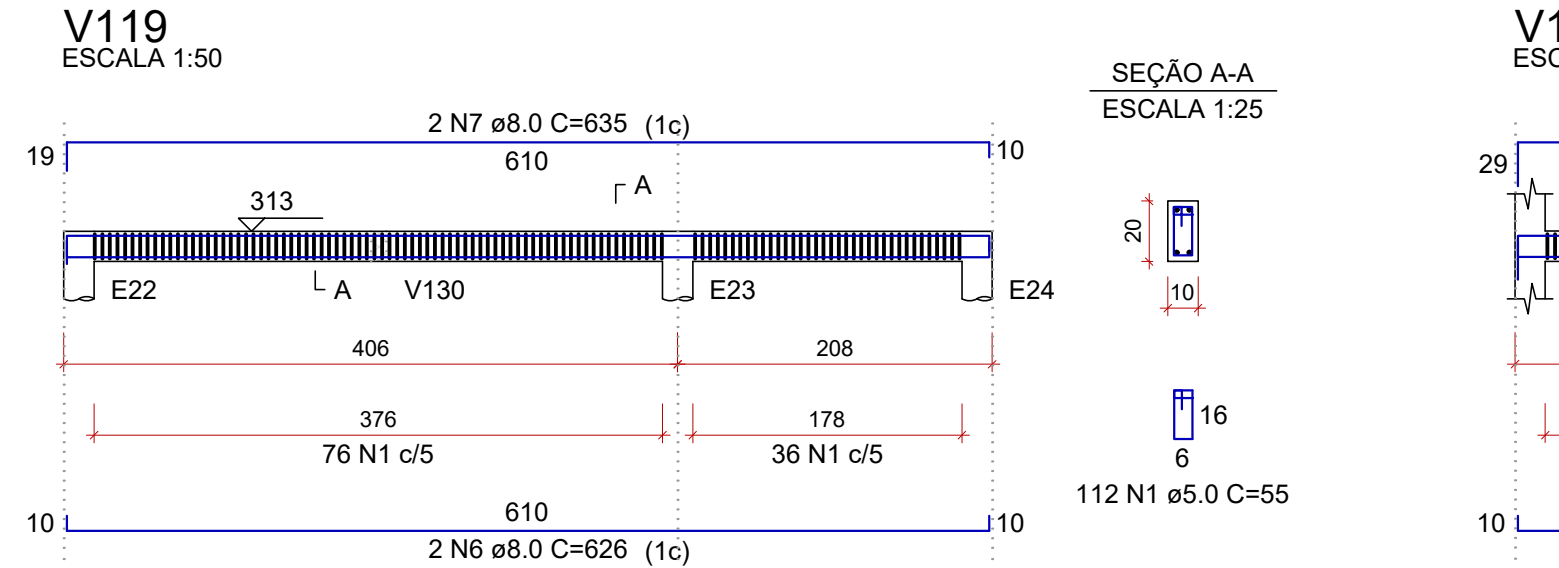
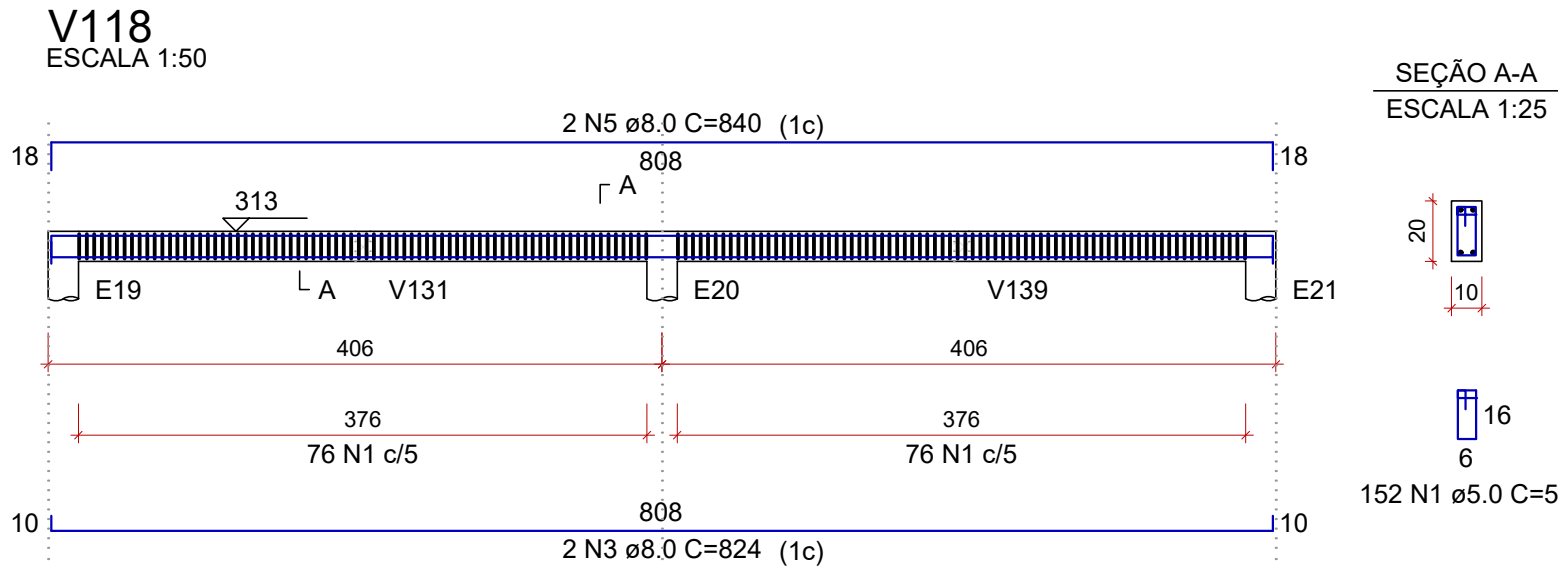
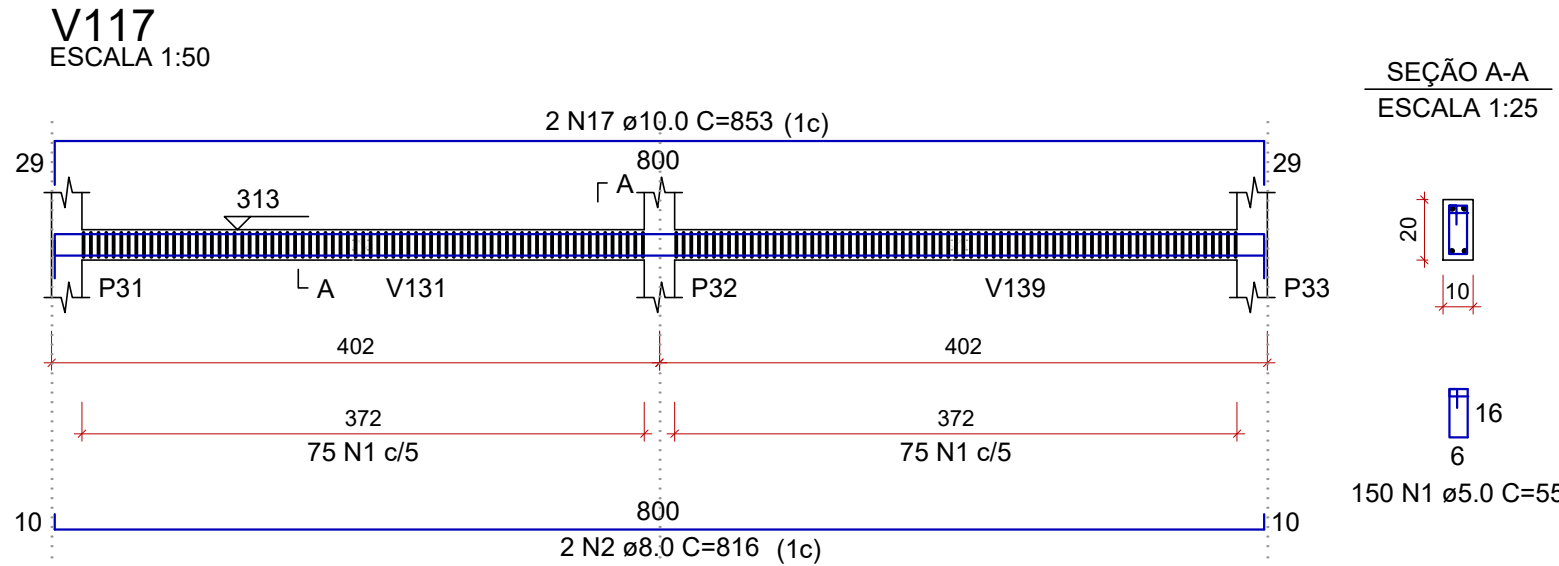
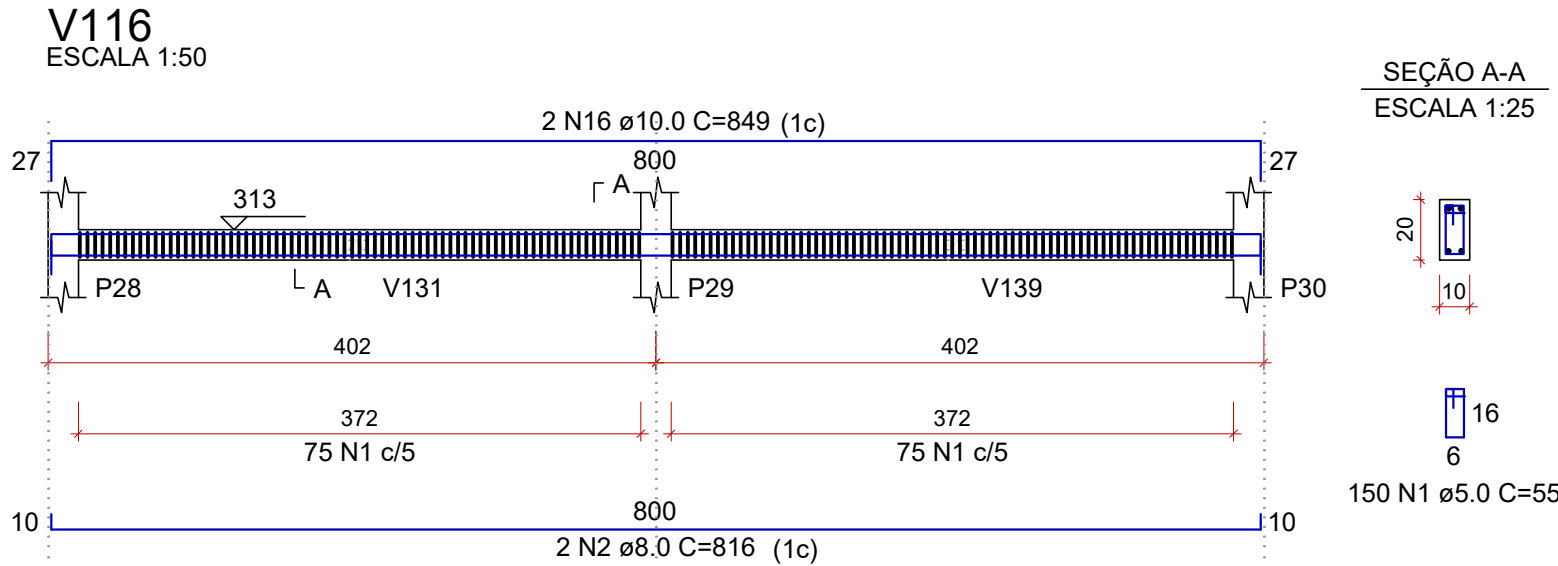
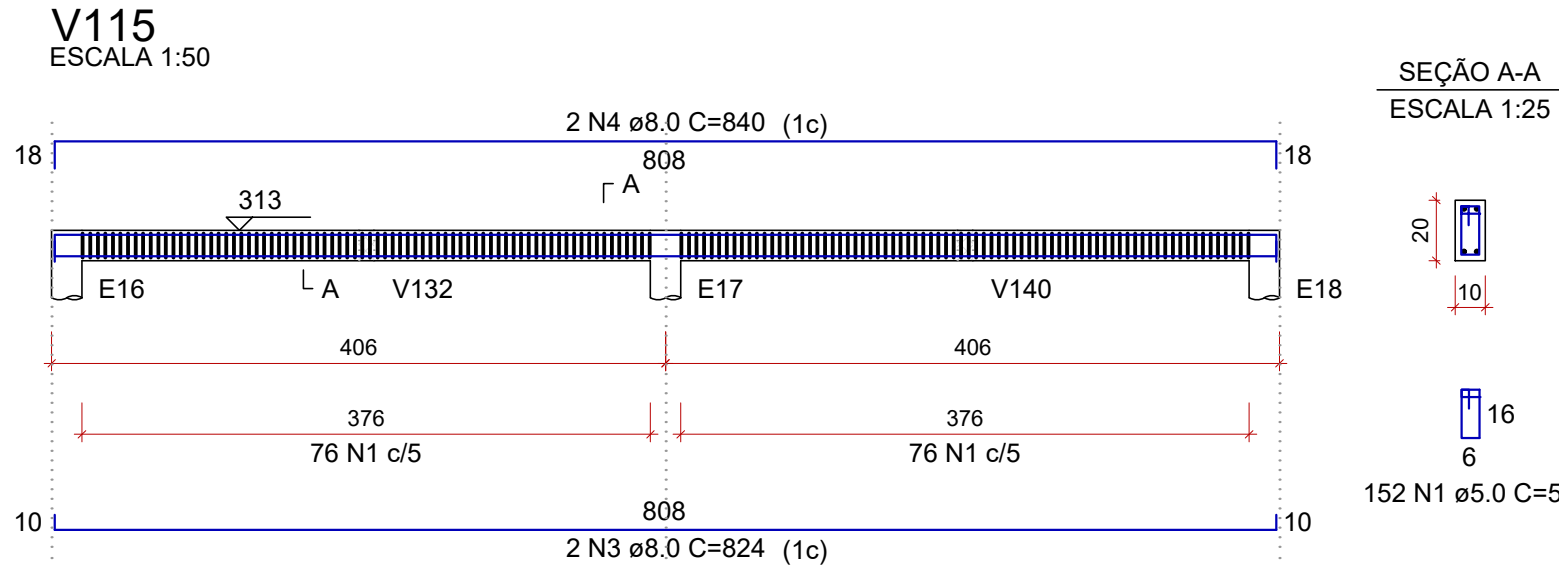
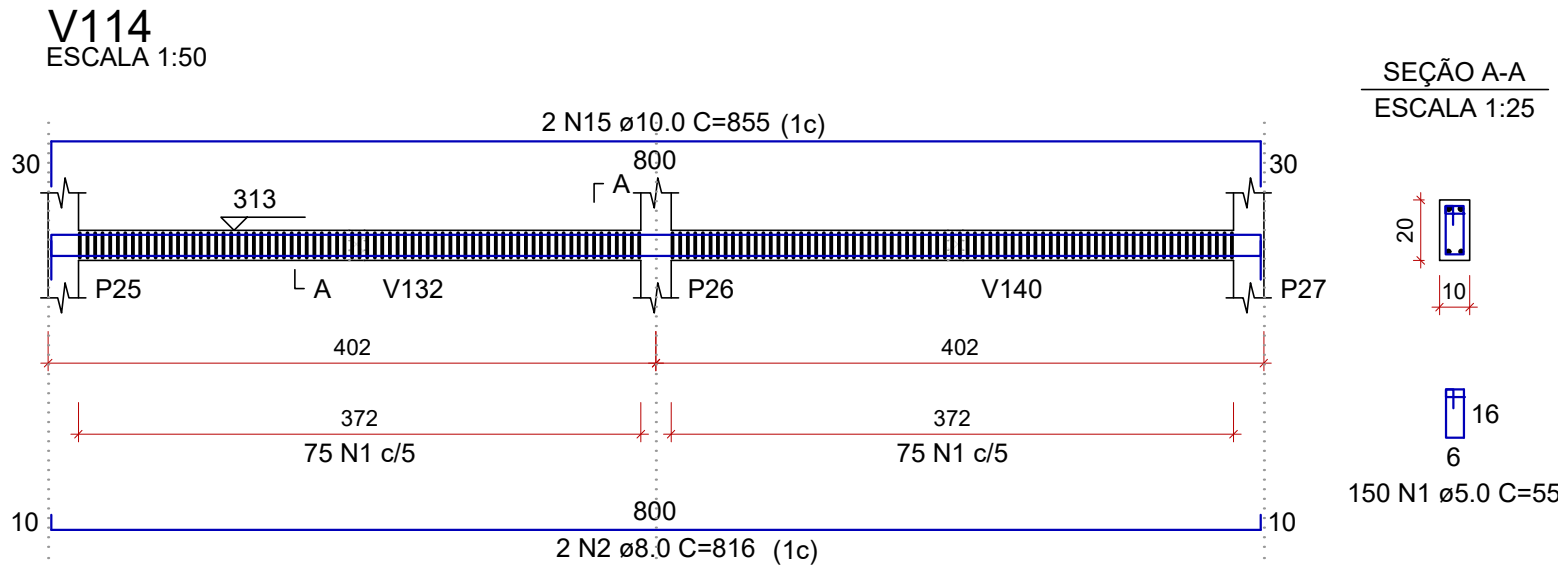


PROJETO ESTRUTURAL - REFORMA E AMPLIAÇÃO DO CENTRO DE BEM ESTAR ANIMAL
ESCALA INDICADA



RELAÇÃO DO AÇO					
V114	V115	V116			
V117	V118	V119			
V120	V121	V122			
V123	V124	V125			
V126	V127				
AÇO	N	DIAM (mm)	QUANT	C.UNIT (cm)	C.TOTAL (cm)
CA60	1	5.0	1465	55	80575
CA50	2	8.0	6	816	4896
	3	8.0	4	824	3296
	4	8.0	2	840	1680
	5	8.0	2	840	1680
	6	8.0	2	626	1252
	7	8.0	2	635	1270
	8	8.0	4	618	2472
	9	8.0	2	152	304
	10	8.0	2	158	316
	11	8.0	2	213	426
	12	8.0	2	219	438
	13	8.0	8	602	4816
	14	8.0	8	333	2664
	15	10.0	2	855	1710
	16	10.0	2	849	1698
	17	10.0	2	853	1706
	18	10.0	2	638	1276
	19	10.0	2	636	1272

RESUMO DO AÇO			
AÇO	DIAM (mm)	C.TOTAL (m)	PESO + 10% (kg)
CA50	8.0	255.1	110.7
CA60	10.0	76.6	52
	5.0	805.8	136.6
PESO TOTAL (kg)			
CA50	162.7		
CA60	136.6		

Volume de concreto (C-30) = 1.46 m³
Área de forma = 36.18 m²

REV. 01	05/09/23	CONFORME SOLICITAÇÕES DA CHEFIA DE GABINETE	DAC
REV. 02	10/02/23	EMIÇÃO INICIAL	DAC
REVISÃO	DATA	DESCRIÇÃO	RESP.
CLIENTE			
			
PROJETO		COORDENAÇÃO	
		ALOÍSO CAETANO FERREIRA	
Rua Cel. Joaquim Francisco, nº 341 Bairro Varginha CEP: 37501-052 - Itajubá / MG Tel: (35) 98414-5841 www.dacengenharia.com.br		RESPONSÁVEL TÉCNICO E AUTOR	
		ENG. CIVIL FLÁVIA BARBOSA CREA MG-187.842/D	
EMPREENDIMENTO			
REFORMA E AMPLIAÇÃO DO CENTRO DE BEM-ESTAR ANIMAL			
ENDEREÇO		DISCIPLINA	
ESTRADA MUNICIPAL ALGODÃO, BAIRRO ALGODÃO POUSO ALEGRE - MINAS GERAIS		ESTRUTURAL	
ASSUNTO		FASE DO PROJETO	
CANIL DETALHAMENTO DAS VIGAS BALDRAME		EXECUTIVO	
		FOLHA Nº.	
		04/14	
DATA INICIAL	ESCALA	REVISÃO	ARQUIVO
10/02/2023	INDICADA	R01	DAC-PMPA-CBA-PE-EST-R01.DWG